

Accessing the Avigilon Demo NVR


The Avigilon Demo NVR can be accessed remotely from both ACC Mobile and the Avigilon Control Center Client software.

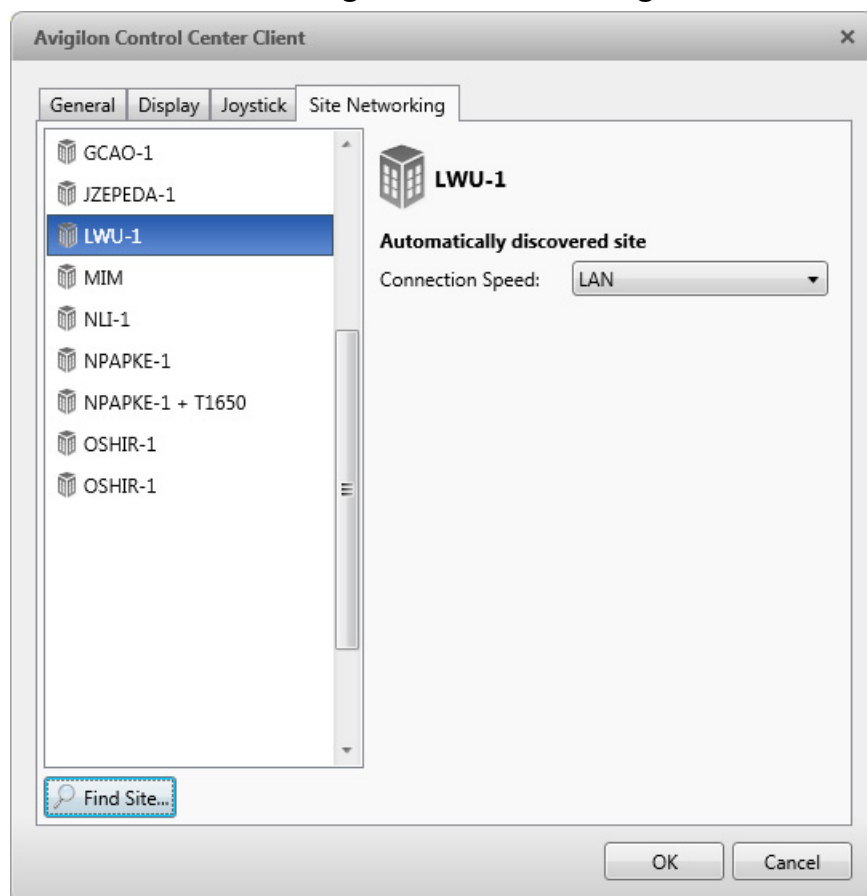
From ACC Client

The Avigilon Control Center Client software is available for download from the support page of the Avigilon website <http://www.avigilon.com/>

After you download and install the ACC Client software, you can access the Avigilon Demo Server to use the features available in the software.

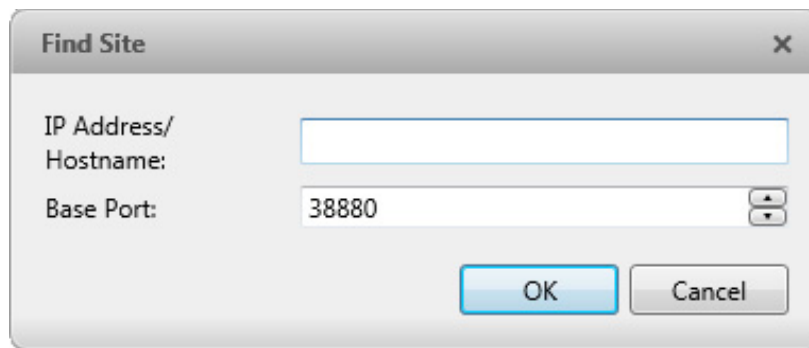
ACC 5.x Client

1. Open the Avigilon Control Center Client.
2. Select  > **Client Settings** > **Site Networking**.



3. Click **Find Site...**

4. In the following dialog box, enter the following:


A dialog box titled "Find Site" with a close button (X) in the top right corner. It contains two input fields: "IP Address/Hostname:" and "Base Port:". The "Base Port:" field has the value "38880" entered. At the bottom, there are "OK" and "Cancel" buttons.

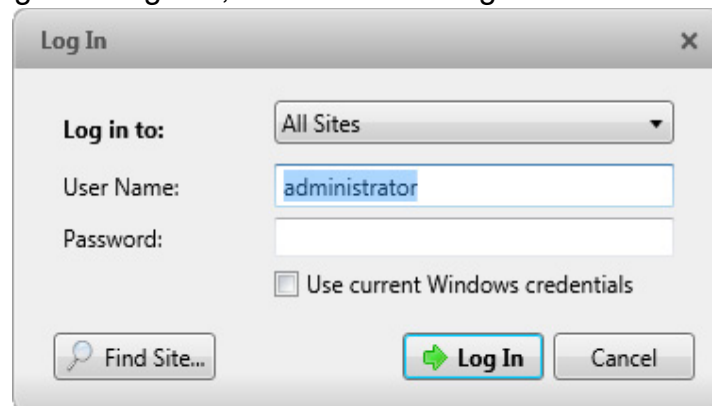
Find Site

IP Address/
Hostname:

Base Port: 38880

OK Cancel

- a. **Hostname/IP Address:** acc5.avigilon.com
 - b. **Base Port:** 38880
5. Click **OK**. The Avigilon Demo NVR is added to the System Explorer.
6. Open the Log In dialog box for the Avigilon Demo NVR.
- Right-click Avigilon Demo NVR in the System Explorer and select **Log In**.
 - Select  > **Log In** then select Avigilon Demo NVR from the drop down list.
7. In the Log In dialog box, enter the following:

A dialog box titled "Log In" with a close button (X) in the top right corner. It contains a "Log in to:" dropdown menu set to "All Sites", a "User Name:" field with "administrator" entered, and a "Password:" field. There is a checkbox labeled "Use current Windows credentials" which is unchecked. At the bottom, there are "Find Site..." (with a magnifying glass icon), "Log In" (with a green arrow icon), and "Cancel" buttons.

Log In

Log in to: All Sites

User Name: administrator

Password:

☐ Use current Windows credentials

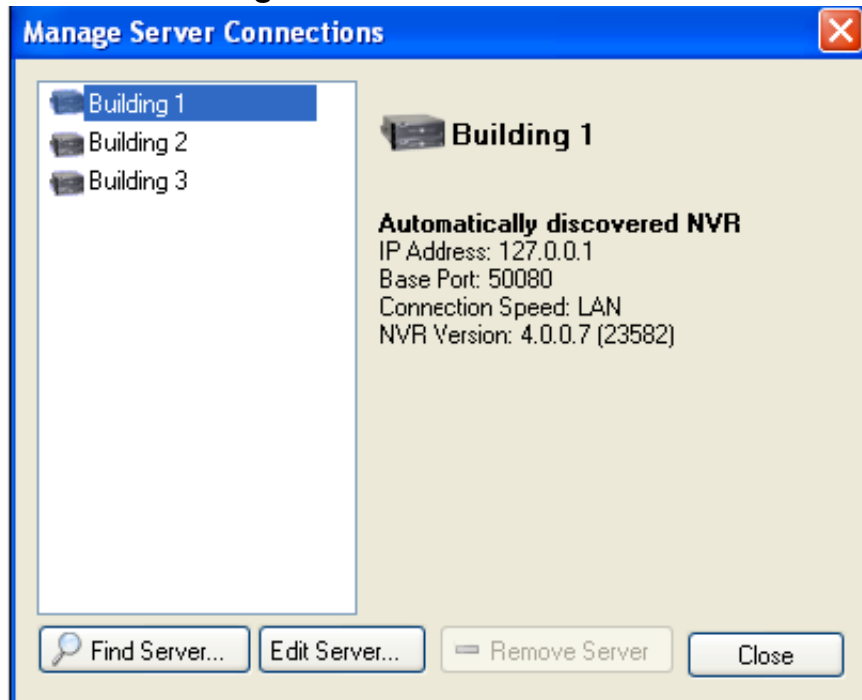
Find Site... Log In Cancel

- **Username:** acc_remote
 - **Password:** accacc
8. Click **Log In**. You are now logged into the Avigilon Demo Server.

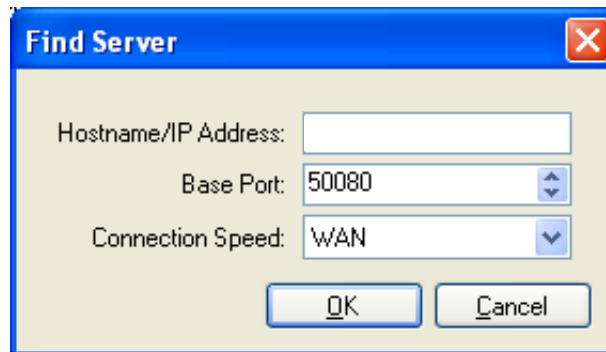
For more information about how to use the features available in Avigilon Control Center Client software, see the *Avigilon Control Center 5.0 Client User Guide*.

ACC 4.x Client

1. Open the Avigilon Control Center Client.
2. Select **File > Manage Server Connections**.



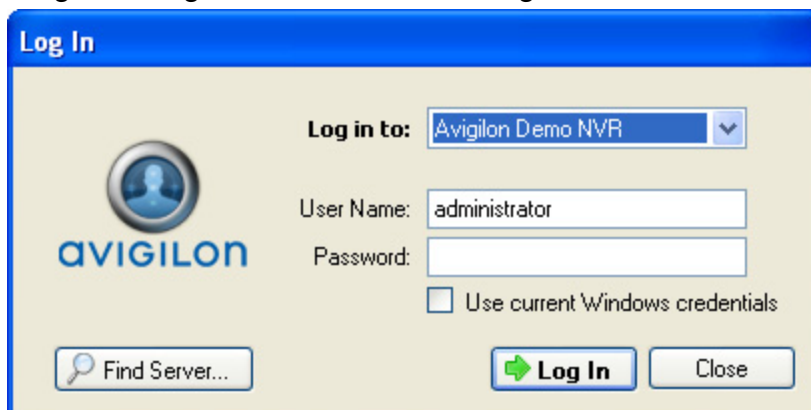
3. Click **Find Server...**
4. In the Find Server dialog box, enter the following:



- a. **Hostname/IP Address:** acc.avigilon.com
 - b. **Base Port:** 50080
 - c. **Connection Speed:** select WAN if you are on a low bandwidth network, or select LAN if you are on a high bandwidth network.
5. Click **OK**. The Avigilon Demo NVR is added to the System Explorer.
 6. Open the Log In dialog box for the Avigilon Demo NVR.
 - Right-click Avigilon Demo NVR in the System Explorer and select **Log In**.

- Select **File > Log In** then select Avigilon Demo NVR from the drop down list.

7. In the Log In dialog box, enter the following:

The image shows a 'Log In' dialog box with a blue title bar. On the left is the Avigilon logo, which consists of a circular icon with a person silhouette and the word 'AVIGILON' below it. To the right of the logo, there is a 'Log in to:' label followed by a dropdown menu showing 'Avigilon Demo NVR'. Below this are two text input fields: 'User Name:' containing 'administrator' and 'Password:' which is empty. A checkbox labeled 'Use current Windows credentials' is located below the password field. At the bottom left is a button with a magnifying glass icon and the text 'Find Server...'. At the bottom right are two buttons: a green 'Log In' button and a 'Close' button.

- **Username:** acc_remote

- **Password:** accacc

8. Click **Log In**. You are now logged into the Avigilon Demo Server.



For more information about how to use the features available in Avigilon Control Center Client software, see the *Avigilon Control Center 4.12 Client User Guide*.

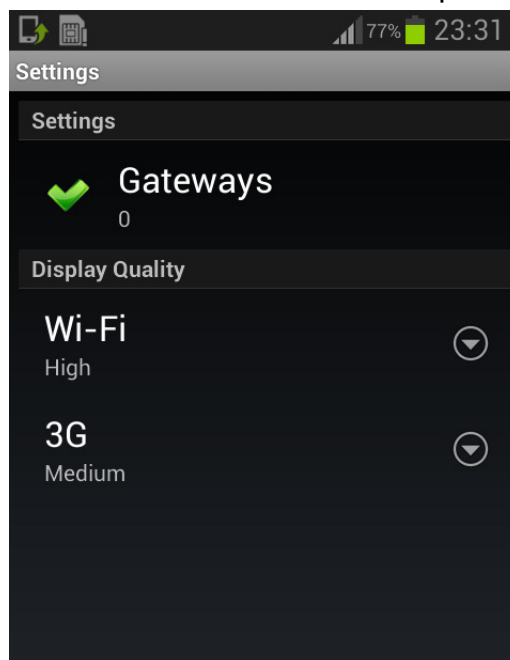
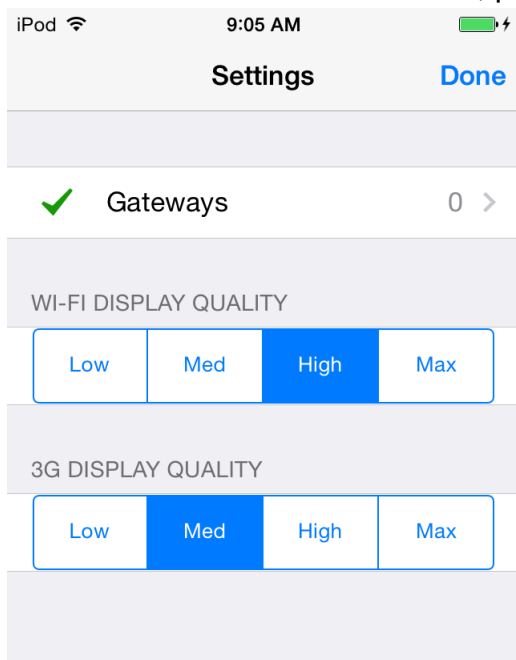
From ACC Mobile

The Avigilon Control Center Mobile app is available for download from the Apple App Store or Google Play.

After you download and install ACC Mobile to your mobile device, you can access the Avigilon Demo NVR to use the features available in ACC Mobile.

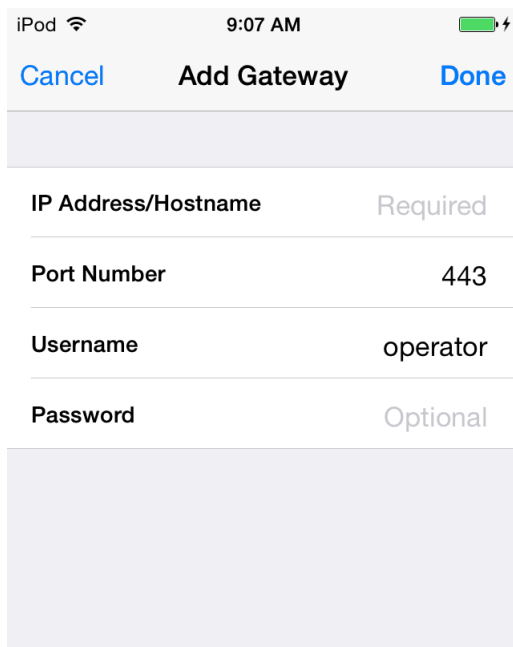
NOTE: The demo gateway is only connected to the ACC 5 Demo Server.

1. Tap  to open ACC Mobile.
2. Access the Settings screen.
 - If this is the first time you have opened ACC Mobile, you are automatically taken to the Settings screen.
 - For Apple devices, tap the View screen once then tap .
 - For Android devices, press the device Menu button then tap **Settings**.



3. On the Settings screen, tap **Gateways**.
 - If you have not added any Gateways, you will automatically be taken to the Add Gateways screen.
 - If you already have a Gateway set up, you will be taken to the Gateways list. Tap **Add Gateway**.

4. On the Add Gateways screen, enter the following:



iPod 9:07 AM

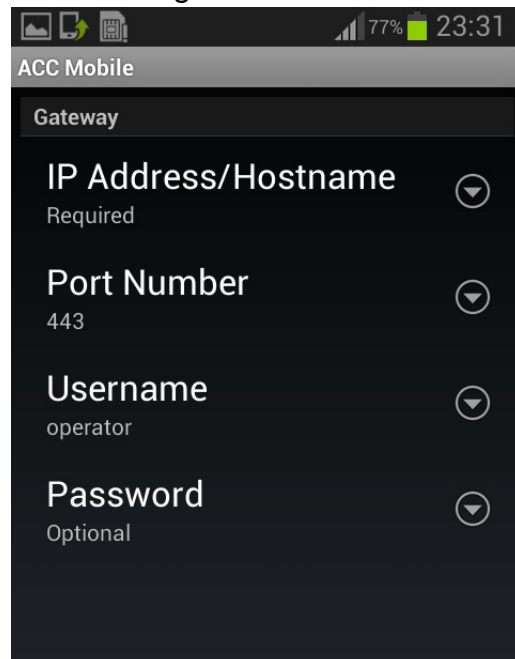
Cancel Add Gateway Done

IP Address/Hostname Required

Port Number 443

Username operator

Password Optional



ACC Mobile 77% 23:31

Gateway

IP Address/Hostname Required

Port Number 443

Username operator

Password Optional

a. **IP Address/Hostname:** gateway.avigilon.com

b. **Port Number:** 443

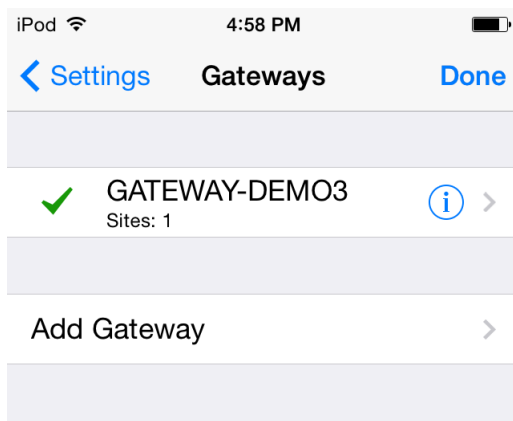
NOTE: Port 443 is the default HTTPS port. It is recommended that you use HTTPS to connect to all gateways, do not use port 80.

c. **Username:** operator

d. **Password:** *blank*

5. Tap **Done** or **OK**.

6. On the following screen, tap the Avigilon Gateway.

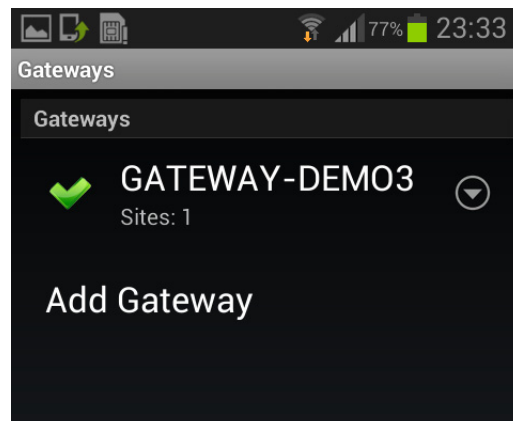


iPod 4:58 PM

Settings Gateways Done

✓ GATEWAY-DEMO3 Sites: 1

Add Gateway



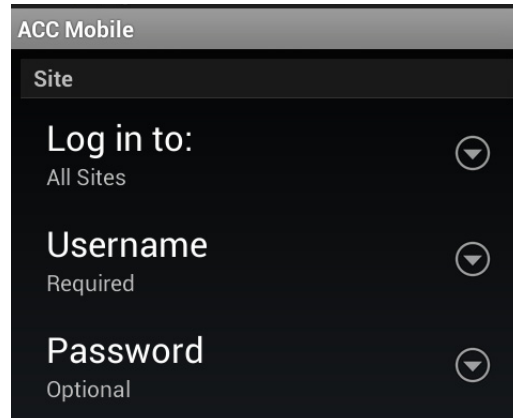
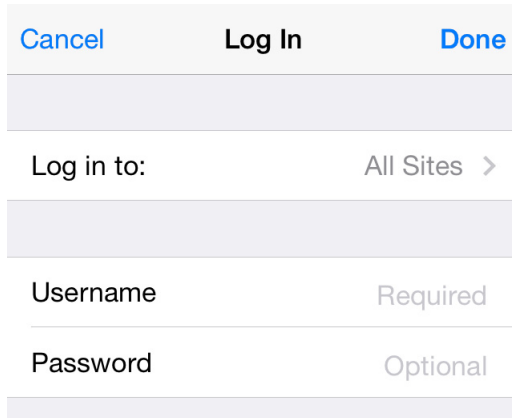
ACC Mobile 77% 23:33

Gateways

✓ GATEWAY-DEMO3 Sites: 1

Add Gateway

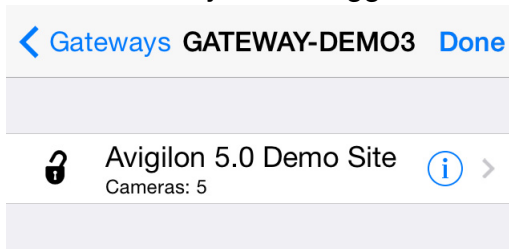
7. On the Log In screen, enter the username and password for the Avigilon Demo Site.



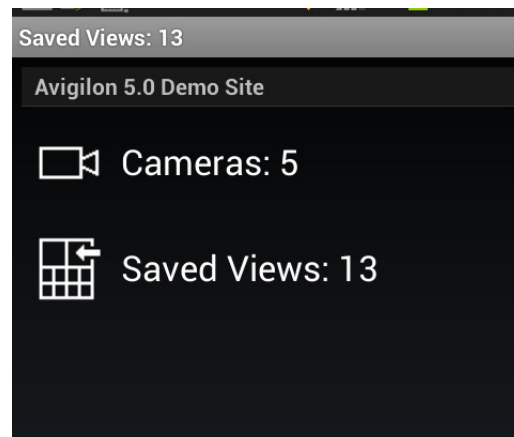
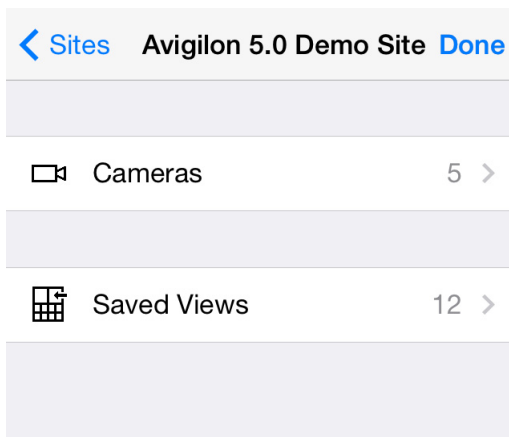
- **Username:** acc_remote

- **Password:** accacc

8. Tap **Done**. The following screen should display the Avigilon Demo Site and show that you are logged in.



9. Tap the Avigilon Demo Site. The following screen lists the cameras and Saved Views that are available on the Site.



For more information about how to use the other features available in ACC Mobile, see the *Avigilon Control Center Mobile User Guide*.

©2010 - 2014 Avigilon Corporation. All rights reserved. Unless expressly granted in writing, no license is granted with respect to any copyright, industrial design, trademark, patent or other intellectual property rights of Avigilon Corporation or its licensors.

Avigilon is an unregistered and/or registered trademark of Avigilon Corporation in Canada and other jurisdictions worldwide. Other product names mentioned herein may be the unregistered and/or registered trademarks of their respective owners. "™" and "®" are not used in association with each trademark in this document.

This manual has been compiled and published covering the latest product descriptions and specifications. The contents of this manual and the specifications of this product are subject to change without notice. Avigilon reserves the right to make changes without notice in the specifications and materials contained herein and shall not be responsible for any damages (including consequential) caused by reliance on the materials presented, including but not limited to typographical and other errors relating to the publication.